

Models 5 / 6

Manual Cash Drawers



Applications

- Auxiliary Drawers
- Carnivals
- Concession Stands / Trailers
- Festivals
- Flea Markets
- Fund Raisers
- Parking Booths
- Seasonal Bars
- Ticket Windows

Manual Cash Drawers

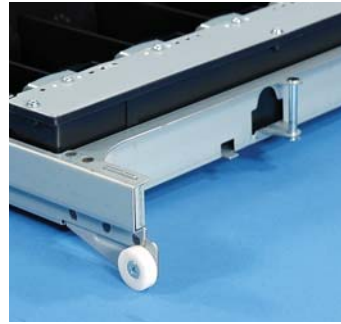
The CRS Models 5 and 6 Cash Drawers can be placed anywhere – just push on the drawer front to open or close.

- Large Flexible Storage Area Under the Insert's Coin Section
- Steel Rails with Heavy Duty Nylon Rollers
- Completely Adjustable Bill Weights and Coin Dividers to Customize the Insert to Your Personal Preference
- Extra Storage is Available for Coin Rolls in the Removable Coin Tray

Models 5 / 6 Manual Cash Drawers



Large Storage Area Under the Coin Section



Steel Side Rails with Heavy Duty Nylon Rollers



Heavy Duty Latch Mechanism



Easily Mounts Under the Counter with Optional Universal Brackets

Features

- Push the Drawer Front with Your Finger to Open or Close
- Steel Construction
- Two Media Slots
- Large Storage Area in the Till Under the Coin Section
- Spring Activated Bill Weights
- 2-Position / 3-Function Lock
- Metal Housing and Drawer
- Durable Ivory or Black Powder Coat Finish
- Heavy Duty Latch
- Heavy Duty Nylon Rollers

Options And Upgrades

- 5 Bill / 5 Coin Replacement Insert
- Universal Under Counter Mounting Brackets

Specifications

Cabinet Color: Ivory or Black Powder Coat Finish
Bill / Coin Compartments: 5 Bill / Up to 9 Coin with Adjustable Bill Weights and Bill and Coin Dividers

2-Position / 3-Function Drawer Lock: Push Release, Lock-Close, Lock-Open

Media Slots: Two – 4" Long

Drawer Compulsion: Not Applicable

Cable / Connector: Not Applicable

Printer Interface Pin-Out Assign.: Not Applicable

Solenoid Voltage: Not Applicable

Dimensions – Drawer: 16-1/8"W x 3-15/16"H x 16-3/8"D

Insert: 14"W x 2-1/2"H x 12-5/8"D

Shipping Carton: 18-1/4"W x 5-1/2"H x 18-1/4"D

Shipping Weight: 17.10 lbs.



All product and company names are trademarks or registered trademarks of their respective owners.